



Wastewater treatment plant **AZUD WW**, to meet the discharge or recycled requirements of urban and industrial wastewater.

The plant uses the **MBBR** (Moving Bed Bio Reactor) technology, based on the growth of biomass in a plastic supports (**carriers**) suspended in the bioreactor mixed liquor. These carriers allow more concentration of microorganisms per unit volume than a conventional system, reaching high quality effluent in a minimum area of implementation. MBBR system is a simple and robust process, that makes possible increasing the wastewater treatment capacity by simply increasing the percentage of carriers in the reactor.



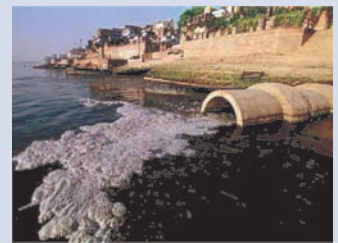
Food & Beverage

Installation elements: Compact / Civil Works

- 1 **Homogenization tank** for effluent flow and pollution load.
- 2 **Rotor Screen**
- 3 **MBBR reactors** with chamber for removal of fats and oils and **air distribution** system to oxygenate the microorganisms nested in the carriers.
- 4 **Lamellar Decanter**.
- 5 **Sludge thickener**.
- 6 **Inspection Hatch**.
- 7 **Control cabinet / room**, containing **blowers pumps, electrical panel** and **automation**.



Landscape



Towns



Urbanizations

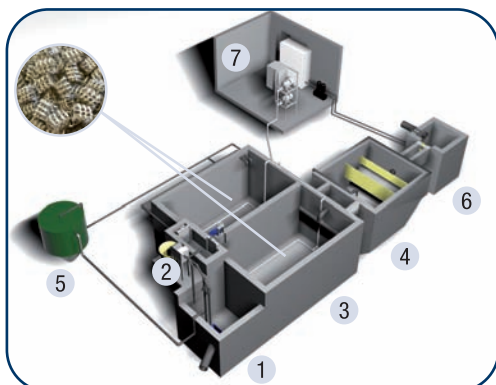


Fig 1. Civil Works WWTP

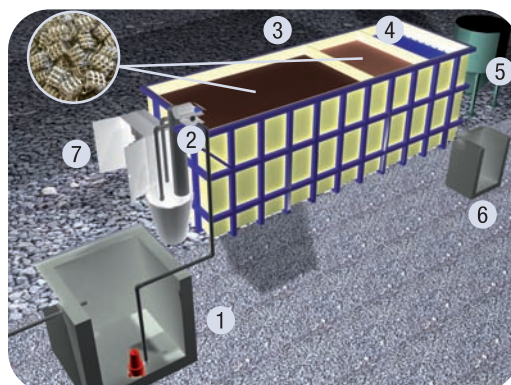


Fig 2. Compact WWTP



Wastewater treatment plant AZUD WW PACK, designed for onsite wastewater treatment from populations and industries, to meet de discharge or recycled requirements.

AZUD WW PACK plants uses the MBBR (Moving Bed Bio Reactor) technology, and they are supplied in a adapted ISO 20', 40' or 40' HC shipping container, with corrosion-proof on the inside, and weather-proof on the outside. Control cabinet is insulated to withstand cold and warm climates, and it's included all necessary equipment for quick installation where wastewater has to be treated.

CONTAINERIZED WASTEWATER TREATMENT

Plant elements:

- 1 Homogenization tank
- 2 Rotor Screen
- 3 MBBR reactors

- 4 Lamellar Decanter.
- 5 Control cabinet
- 6 Inspection Hatch



Industry



Towns



Residential areas

Models	% Camers	Population Equivalent	Daily Flow m ³ /d	Dimensions (m) Al x An x L
AZUD WW PACK MMBR 20C	20 - 50 - 70	150 - 375 - 500	30 - 75 - 100	ISO 20' (2,6 x 2,4 x 6,1)
AZUD WW PACK MMBR 40C	20 - 50 - 70	150 - 375 - 500	30 - 75 - 100	ISO 40' (2,6 x 2,4 x 12,2)
AZUD WW PACK MMBR 40HC	20 - 50 - 70	150 - 375 - 500	30 - 75 - 100	ISO 40'HC (2,9 x 2,4 x 12,2)